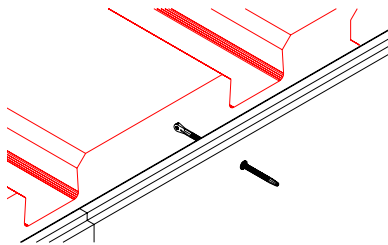
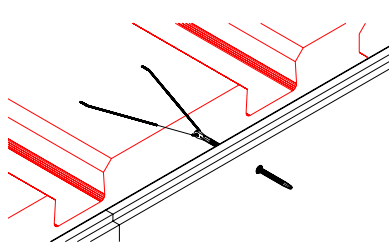


Details: Yoke & Tie/Waler for Use With Insulating Concrete Floor and Roofing Systems for 12.5" Beam Depth

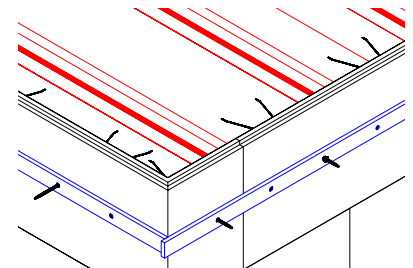
Using the VBUCK® brand Yoke & Tie system when installing insulating concrete floor and roofing systems will save labor and help with stabilizing walls when placing concrete.



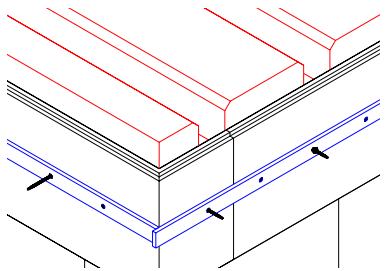
1- Push TIE through outside foam panel and assemble with YOKE.



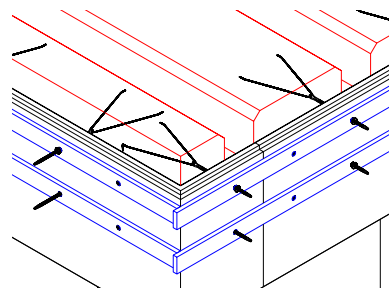
2- Press Yoke (wire) into decking foam. YOKE & TIE/WALER™ should be installed every two feet.



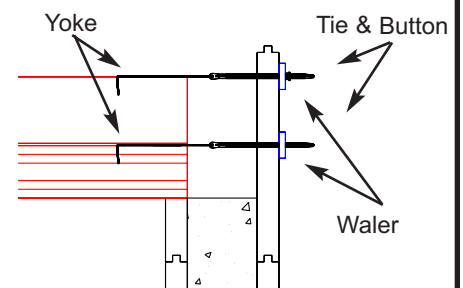
3- Install reusable cellular PVC WALER™ or 1x4 by sliding button onto TIE. Use cinching action to straighten wall.



4- Prepare to add second YOKE & TIE/WALER™ for beams over 12.5 inches deep. (One leg of Yoke must be secured to closest rebar.)



5- Finished assembly should look similar to this. Note corner spacing of YOKE & TIE/WALER™ (If possible, one leg of Yoke must be secured to closest rebar.)



6- Cross section of completed assembly prior to placement of concrete.

VBUCK®

U.S. PAT. 5,996,293 & 6,070,375

Canadian PAT. 2,255,256

www.vbuck.com

Office: 435-752-8453 • FAX: 435-750-6948 • Toll Free: 888-57-VBUCK (578-2825)